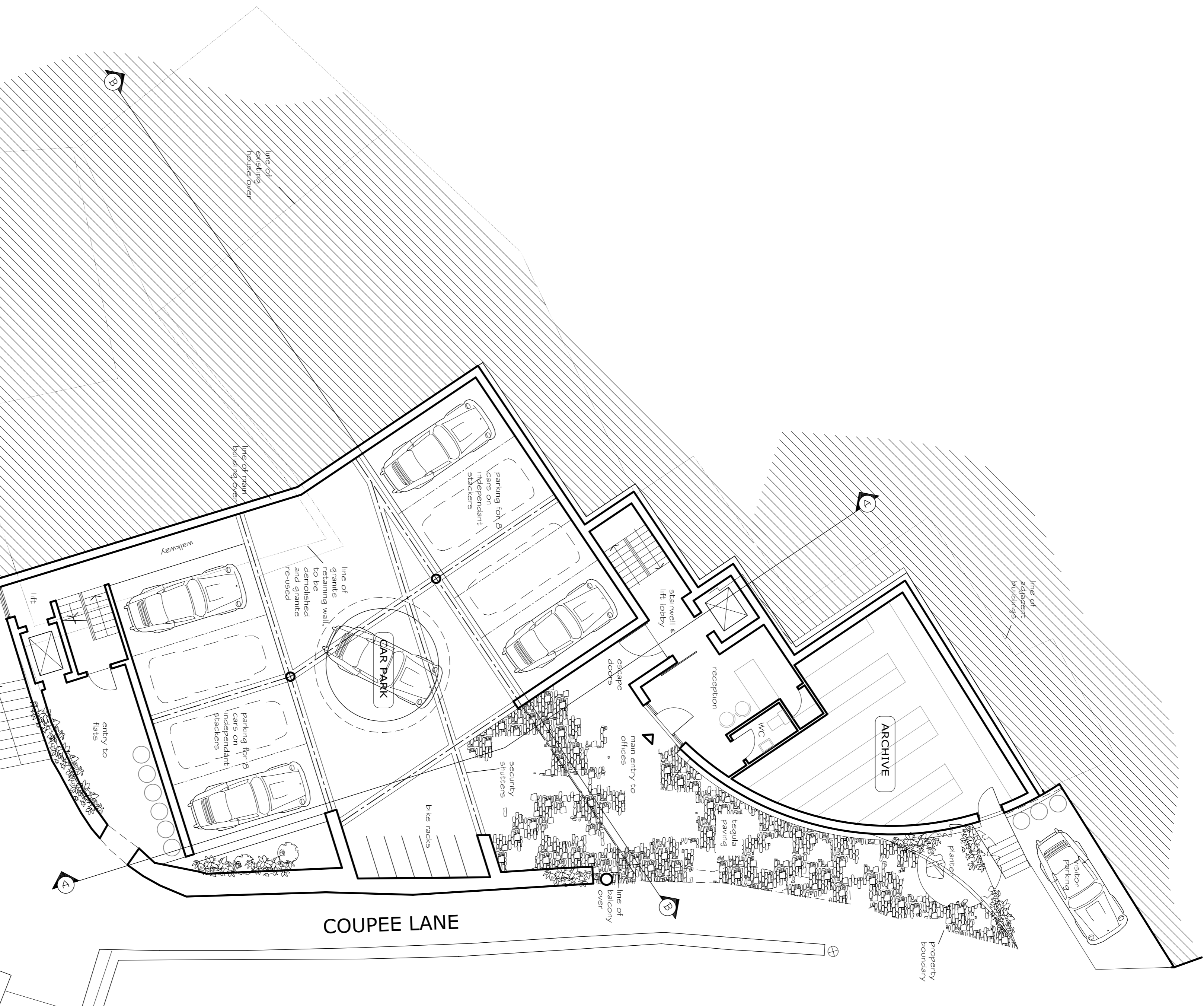


notes

THE CONTRACTOR & HIS SUB-CONTRACTORS ARE TO VERIFY ALL DIMENSIONS ON SITE BEFORE MAKING SHOP DRAWINGS OR COMMENCING MANUFACTURE
THIS DRAWING IS COPYRIGHT



LEVEL 0

1:100

B	Revised scheme	Apr '04
General revisions in accordance with Architects Review Panel Recommendations.		
A	Revised scheme amendments	Mar '04
Proposed Development at Coupee Lane St Peter Port for Dounefour Property Company		
SKETCH SCHEME		
Level 0		

Cresswell
Cuttle & Dyke

CHARTERED ARCHITECTS OF GUERNSEY

Cresswell, Cuttle & Dyke Limited
Troilogan, Channel Islands, GY1 2XV
Tel: (01481) 724481 Fax: (01481) 726028
E-mail: info@cresswellcuttledyke.com www: www.ccd-architects.com

scale	1:100	date	June 2003
drawing no.	2597		
			6B